

**COMMERCIAL FULL REPORT**  
**706 N Maine Street Unit/Apt #**  
**Remington 47977**



	<b>List Price</b> \$192,600	<b>Orig \$</b> \$192,600	<b>Sale \$</b>	<b>Status</b> Active
	<b>MLS #</b> 201814221	<b>Area</b> Jasper County	<b>Type</b> Other/Unknown	<b>DOM</b> 3
	<b>Orig MLS #</b>			
	<b>Currently Leased</b> No	<b>Lease Avail</b>	<b>Lease Term Rem</b> 0	
	<b>Pend Date</b>		<b>Closing Date</b>	
	<b>Price Chg</b> 4/13/2018		<b>LDR</b> 4/13/2018 11:34 AM	
	<b>Buyer Off</b>		<b>Buyer Agt</b>	
	<b>Fin. Code</b>		<b>Close Allw</b>	
	<b>Descript</b>		<b>BBC</b> 3%	
	<b>County</b> Jasper County		<b>Township</b> Carpenter	
	<b>REO Y/N</b> No			
	<b>Business Name</b>			

Property Information		Building Information			
<b>Acres</b> 3.3200		<b>Room</b>	<b>Abv Grd SqFt</b>	<b>Below Grd SqFt</b>	<b>Fin Office SqFt</b>
<b># Stories</b> 1.0		<b>Bldg 1</b>	4,380	0	0
<b>Parking</b>		<b>Bldg 2</b>			
<b>Bldg Height</b>		<b>Bldg 3</b>			
<b>Interior Hgt</b> 16					
<b>Ceiling Height</b> 16					
<b>Year Built</b> 1950					
<b>New Const</b> No					
<b>Lot Dim</b> 3.32					

Misc Information	Square Footage	Tax Information
<b>Gross Mo Exp</b>	<b>Apx Lot Sz</b> 144,619	<b>Annual Taxes</b> \$2,661.78
<b>Gross Mo Rent</b>	<b>Total AG SqFt</b> 4,380	<b>Yr Taxes Pay.</b> 2018
	<b>SqFt Source</b>	<b>Assd Value \$</b>
	<b>Full Basement</b> No	

<b>Features:</b>			
<b>BASEMENT/FOUNDATION</b>	Slab	<b>SPECIAL FEATURES</b>	110 Volts, Overhead Door 1, Office Space
<b>HEATING/FUEL</b>	Conventional, Forced Air, Multiple Heating	<b>ENVIRON. REPORTS AVAIL.</b>	
<b>COOLING</b>	Central Air	<b>PROPERTY USE</b>	Vacant-Best for Owner/Usr
<b>EXTERIOR</b>	Block, Vinyl	<b>LAKE TYPE</b>	
<b>SALE INCLUDES</b>	Building, Land	<b>WATER FEATURES</b>	
<b>FIRE PROTECTION</b>	City	<b>EXISTING FINANCING</b>	None
<b>ROOF MATERIAL</b>	Asphalt, Rolled	<b>PROPOSED FINANCING</b>	Cash, Conventional
<b>INTERIOR WALLS</b>	Block, Drywall	<b>EXEMPTIONS</b>	
<b>FLOORING</b>	Carpet, Concrete	<b>DOCUMENTS AVAILABLE</b>	None
<b>PARKING</b>	Gravel, Lot, Off-Street	<b>PRESENT USE</b>	Vacant
<b>INTERNAL ROOMS</b>	Kitchen, Office, Storage	<b>PUBLIC UTILITIES</b>	Electric Hook-Up, Gas Hook-Up, Mun. Sewer Hook-Up, Mun. Water Hook-Up
<b>WATER UTILITY</b>	City	<b>SPECIAL ASSESSMENTS</b>	None
<b>SEWER</b>	City	<b>FENCE</b>	None

**Remarks**

<b>List Office</b>	Hageman Rlty - OFC: 219-261-2657	<b>Office List No.</b> LA179
<b>List Agent</b>	Suzan J Hageman	<b>LB Descr</b> None
<b>Zoning</b>	Other	<b>Zoning Des</b>
<b>Legal</b>	Chambers & Morgan Add S1/2 Blk 4 and PT Blk 1	
<b>Showing</b>		
<b>Directions</b>	North of Remington on US231, Approx 1 mile, property on left.	

**Branded VFour**

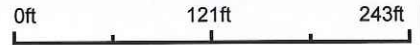
**Unbranded VFour**



# Aerial Map

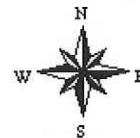


map center: 40° 46' 7.46, -87° 9' 15.92



Maps Provided By:  
 **surety**  
CUSTOMIZED ONLINE MAPPING  
© AgriData, Inc. 2018 www.AgrIDataInc.com

**24-27N-7W**  
**Jasper County**  
**Indiana**



4/16/2018

Field borders provided by Farm Service Agency as of 5/21/2008.